

## Modul Visual Basic Pelatihan Kartu Hasil Study Mahasiswa

1. Buatlah project dengan nama **KHS**
2. Buatlah database dengan nama **datakhs.mdb**
3. Buatlah tabel dengan struktur sbb :

### Tabel : Mahasiswa

Name	Type	Size	Index
Nim	Text	8	<i>Primary Key</i>
Nama	Text	20	
Jur	Text	2	
Jnskel	Text	1	
Almt	Text	25	
Telp	Text	15	

### Tabel : Matakuliah

Name	Type	Size	Index
kdmatakul	Text	3	<i>Primary Key</i>
nmmatakul	Text	20	
sks	Text	1	

### Tabel : Nilai

Name	Type	Size	Index
Nim	Text	8	<i>Primary Key</i>
kdmatakul	Text	3	<i>Unique</i>
Abs	Long	4	
Tgs	Long	4	
Uts	Long	4	
Uas	Long	4	
Total	Long		
Grd	Text	1	

www.fayolinkz.tk

RC

**Form : FrmMhs**

DATA MAHASISWA

SEKOLAH TINGGI ILMU KOMPUTER DAN INFORMATIKA [STIKI]  
Jln Pangeran Diponegoro no 56 Semarang Telp 9477414

---

**DATA MAHASISWA**      LIHAT DATA

**NIM**     

**Nama Mahasiswa**     

**Jurusan**       ▾

**Alamat**     

**Jenis Kelamin**       ▾

**Telepon**     

Tombol Navigasi:

Tombol Fungsi:

Cari Data: NIM

**Buat Satu Buah Data dan DBGrid Pada TAB Lihat Data****1. Data (Propertise)**

- ⊕ Name : dtmahasiswa
- ⊕ Database Name : KHS.mdb
- ⊕ Recordset Type : 0 – Table
- ⊕ Recordsource : mahasiswa

**2. DBGrid (Propertise)**

- ⊕ Name : dbgrid1
- ⊕ DataSource : dtmahasiswa

www.faybinkz.tk

RC

### Listing Form Mahasiswa

#### **Sub aktif()**

```
'txtnim.Enabled = True
txtnama.Enabled = True
cmbjur.Enabled = True
txtalmt.Enabled = True
cmbjen.Enabled = True
txttelp.Enabled = True
```

#### **End Sub**

#### **Sub nonaktif()**

```
txtnim.Enabled = False
txtnama.Enabled = False
cmbjur.Enabled = False
txtalmt.Enabled = False
cmbjen.Enabled = False
txttelp.Enabled = False
```

#### **End Sub**

#### **Sub kosong()**

```
'txtnim = ""
txtnama = ""
cmbjur = ""
txtalmt = ""
cmbjen = ""
txttelp = ""
```

#### **End Sub**

#### **Private Sub cmdexit\_Click()**

```
x = MsgBox("apakah anda mau
keluar?", vbYesNo + vbInformation,
"Info")
```

```
If x = vbYes Then
    Unload Me
```

```
End If
```

#### **End Sub**

#### **Private Sub cmdedit\_Click()**

```
aktif
txtnim.Enabled = False
```

```
cmdsave.Enabled = True
```

#### **End Sub**

#### **Sub tampildata()**

```
On Error GoTo error
With dtmahasiswa.Recordset
```

```
txtnim.Text = !nim
txtnama.Text = !nama
cmbjur = !jur
txtalmt.Text = !almt
cmbjen = !jnskel
txttelp.Text = !telp
```

```
End With
```

```
error:
```

#### **End Sub**

#### **Private Sub cmdback\_Click()**

```
With dtmahasiswa.Recordset
```

```
.MovePrevious
```

```
If .BOF() Then
```

```
.MoveFirst
```

```
MsgBox "Sudah diawal record",
vbOKOnly + vbInformation, "Info"
```

```
End If
```

```
End With
```

```
tampildata
```

#### **End Sub**

#### **Private Sub cmddel\_Click()**

```
x = MsgBox("Yakin data mau
dihapus", vbYesNo + vbInformation,
"Info")
```

```
If x = vbYes Then
```

```
With dtmahasiswa.Recordset
```

```
.Delete
```

```
.MoveFirst
```

```
End With
```

```
MsgBox "Data Berhasil dihapus",
vbOKOnly + vbInformation, "Info"
```

```
End If
tampildata
End Sub
```

```
Private Sub cmdfind_Click()
With dtmahasiswa.Recordset
x = txtcari.Text
.Index = "nim"
.Seek "=", x
If .NoMatch Then
MsgBox "Maaf data tidak ada",
vbOKOnly + vbExclamation, "Info"
txtcari = ""
txtcari.SetFocus
Else
tampildata
End If
End With
nonaktif
End Sub
```

```
Private Sub cmdlast_Click()
dtmahasiswa.Recordset.MoveLast
tampildata
End Sub
```

```
Private Sub cmdnew_Click()
Dim Kode As String
Dim kd As Integer
With dtmahasiswa.Recordset
If .EOF Then
Kode = "1207" & "001"
Else
.MoveLast
kd = Val(Right(!nim, 3)) + 1
Kode = "1207" & Right("000" &
kd, 3)
End If
End With
aktif
txtnim.Text = Kode
txtnama.SetFocus
cmdsave.Enabled = True
```

```
cmdnew.Enabled = False
kosong
End Sub
```

```
Private Sub cmdnext_Click()
With dtmahasiswa.Recordset
.MoveNext
If .EOF() Then
.MoveNext
MsgBox "Sudah diakhir record",
vbOKOnly + vbInformation, "Info"
End If
End With
tampildata
End Sub
```

```
Private Sub cmdsave_Click()
With dtmahasiswa.Recordset
x = txtnim.Text
.Index = "nim"
.Seek "=", x
If .NoMatch Then
.AddNew
!nim = txtnim.Text
!nama = txtnama.Text
!jur = cmbjur
!almt = txtalmt.Text
!jnskel = cmbjen
!telp = txttelp.Text
.Update
Else
.Edit
!nim = txtnim.Text
!nama = txtnama.Text
!jur = cmbjur
!almt = txtalmt.Text
!jnskel = cmbjen
!telp = txttelp.Text
.Update
End If
End With
MsgBox "Data berhasil disimpan",
vbOKOnly + vbInformation, "Info"
```

```

nonaktif
tampildata
cmdsave.Enabled = False
cmdnew.Enabled = True
End Sub

```

```

Private Sub cmdtop_Click()
dtmahasiswa.Recordset.MoveFirst
tampildata
End Sub

```

```

Private Sub Form_Activate()
On Error GoTo error
nonaktif
tampildata
cmdsave.Enabled = False
error:
End Sub

```

```

Private Sub Form_Load()
With cmbjur
.AddItem "KA"
.AddItem "MI"
.AddItem "TK"
End With

```

```

With cmbjen
.AddItem "P"
.AddItem "W"
End With
End Sub

```

### Form : Frmmatkul

**Buat Satu Buah Data dan DBGrid Pada TAB Lihat Data****1. Data (Propertise)**

⊕ Name : dtmatkul  
 ⊕ Database Name : KHS.mdb  
 ⊕ Recordset Type : 0 – Table  
 ⊕ Recordsource : matakuliah

**2. DBGrid (Propertise)**

⊕ Name : dbgrid1  
 ⊕ DataSource : dtmatkul

**Listing Form Matakuliah****Sub aktif()**

```

txtkode.Enabled = True
txtnama.Enabled = True
txtsks.Enabled = True

```

**End Sub****Sub nonaktif()**

```

txtkode.Enabled = False
txtnama.Enabled = False
txtsks.Enabled = False

```

**End Sub****Sub kosong()**

```

txtkode = ""
txtnama = ""
txtsks = ""

```

**End Sub****Sub tampildata()**

```

On Error GoTo error
With dtmatkul.Recordset
txtkode.Text = !kmatkul
txtnama.Text = !nmatkul
txtsks.Text = !sks
End With
error:

```

**End Sub****Private Sub cmdback\_Click()**

```

With dtmatkul.Recordset

```

```

.MovePrevious
If .BOF() Then
.MoveFirst
MsgBox "Sudah diawal record",
vbOKOnly + vbInformation, "Info"
End If

```

```

End With
tampildata

```

**End Sub****Private Sub cmddel\_Click()**

```

x = MsgBox("Yakin data mau
dihapus", vbYesNo + vbInformation,
"Info")

```

```

If x = vbYes Then

```

```

    With dtmatkul.Recordset

```

```

        .Delete

```

```

        .MoveFirst

```

```

    End With

```

```

    MsgBox "Data Berhasil dihapus",
vbOKOnly + vbInformation, "Info"

```

```

End If

```

```

tampildata

```

**End Sub****Private Sub cmdedit\_Click()**

```

aktif

```

```

txtkode.Enabled = False

```

```

cmdsave.Enabled = True

```

**End Sub**

```

Private Sub cmdexit_Click()
x = MsgBox("apakah anda mau
keluar?", vbYesNo + vbInformation,
"Info")
If x = vbYes Then
    Unload Me
End If
End Sub

```

```

Private Sub cmdfind_Click()
With dtmatkul.Recordset
x = txtcari.Text
.Index = "kdmatkul"
.Seek "=", x
If .NoMatch Then
    MsgBox "Maaf data tidak ada",
vbOKOnly + vbExclamation, "Info"
    txtcari = ""
    txtcari.SetFocus
Else
    tampildata
End If
End With
nonaktif
End Sub

```

```

Private Sub cmdlast_Click()
dtmatkul.Recordset.MoveLast
tampildata
End Sub

```

```

Private Sub cmdnew_Click()
Dim Kode As String
Dim kd As Integer
With dtmatkul.Recordset
    If .EOF Then
        Kode = "1" & "01"
    Else
        .MoveLast
        kd = Val(Right(!kdmatkul, 2)) +
1
        Kode = "1" & Right("00" & kd,
2)

```

```

    End If
End With
aktif
txtkode.Text = Kode
txtnama.SetFocus
cmdsave.Enabled = True
cmdnew.Enabled = False
kosong
End Sub

```

```

Private Sub cmdnext_Click()
With dtmatkul.Recordset
.MoveNext
If .EOF() Then
.MoveNextLast
MsgBox "Sudah diakhir record",
vbOKOnly + vbInformation, "Info"
End If
End With
tampildata
End Sub

```

```

Private Sub cmdsave_Click()
With dtmatkul.Recordset
x = txtkode.Text
.Index = "kdmatkul"
.Seek "=", x
If .NoMatch Then
    .AddNew
!kdmatkul = txtkode.Text
!nmmatkul = txtnama.Text
!sks = txtsks.Text
.Update
Else
    .Edit
!kdmatkul = txtkode.Text
!nmmatkul = txtnama.Text
!sks = txtsks.Text
.Update
End If
End With
MsgBox "Data berhasil disimpan",
vbOKOnly + vbInformation, "Info"

```

```

nonaktif
tampildata
cmdsave.Enabled = False
cmdnew.Enabled = True
End Sub

```

```

Private Sub cmdtop_Click()
dtmatkul.Recordset.MoveFirst
tampildata
End Sub

```

```

Private Sub Form_Activate()
On Error GoTo error
nonaktif
tampildata
cmdsave.Enabled = False
error:
End Sub

```

### Form : Frmnilai

### Buat Tiga(3) Buah Data

#### 1. Data1 (Propertise)

- ⊕ Name : dtmhs
- ⊕ Database Name : KHS.mdb
- ⊕ Recordset Type : 0 – Table
- ⊕ Recordsource : mahasiswa

#### 2. Data2 (Propertise)

- ⊕ Name : dtmatkul
- ⊕ Database Name : KHS.mdb

www.faybinkz.tk



- ⊕ Recordset Type : 0 – Table
- ⊕ Recordsource : matakuliah

### 3. Data3 (Propertise)

- ⊕ Name : dtnilai
- ⊕ Database Name : KHS.mdb
- ⊕ Recordset Type : 0 – Table
- ⊕ Recordsource : nilai

#### Langkah Pembuatan DBCombo

- ⊕ Klik Kanan pada ToolBox → Pilih Components → Microsoft Data Bound List Control 6.0
- ⊕ Ceklist → Apply → Ok
- ⊕ Untuk NIM
  - Name : dbcnim
  - ListField : nim
  - RowSource : dtmhs (data mahasiswa)
- ⊕ Untuk Kode Matakuliah
  - Name : dbckode
  - ListField : kdmatkul
  - RowSource : dtmatkul (data matakuliah)

#### Listing Form Nilai

##### **Sub nonaktif()**

```
Me.dbcnim.Enabled = False
Me.txtnmhs.Enabled = False
Me.txtjurusan.Enabled = False
Me.dbckode.Enabled = False
Me.txtnmatkul.Enabled = False
Me.txtsks.Enabled = False
Me.txtabsen.Enabled = False
Me.txttugas.Enabled = False
Me.txttuts.Enabled = False
Me.txtuas.Enabled = False
Me.txttotal.Enabled = False
Me.txtgrade.Enabled = False
End Sub
```

##### **Sub aktif()**

```
Me.dbcnim.Enabled = True
Me.txtnmhs.Enabled = True
Me.txtjurusan.Enabled = True
Me.dbckode.Enabled = True
```

```
Me.txtnmatkul.Enabled = True
Me.txtsks.Enabled = True
Me.txtabsen.Enabled = True
Me.txttugas.Enabled = True
Me.txttuts.Enabled = True
Me.txtuas.Enabled = True
Me.txttotal.Enabled = True
Me.txtgrade.Enabled = True
End Sub
```

##### **Sub bersih()**

```
Me.dbcnim.Text = ""
Me.txtnmhs.Text = ""
Me.txtjurusan.Text = ""
Me.dbckode.Text = ""
Me.txtnmatkul.Text = ""
Me.txtsks.Text = ""
Me.txtabsen.Text = ""
Me.txttugas.Text = ""
Me.txttuts.Text = ""
```

```
Me.txtuas.Text = ""
Me.txttotal.Text = ""
Me.txtgrade.Text = ""
End Sub
```

#### **Private Sub cmdadd\_Click()**

```
aktif
bersih
cmdsave.Enabled = True
End Sub
```

#### **Private Sub cmdexit\_Click()**

```
x = MsgBox("apakah anda mau
keluar?", vbYesNo + vbInformation,
"Info")
If x = vbYes Then
    Unload Me
    frmmenu.Show
End If
End Sub
```

#### **Private Sub cmdlihat\_Click()**

```
frmlihat.Show
End Sub
```

#### **Private Sub cmdsave\_Click()**

```
With dtnilai.Recordset
    .Index = "nim"
    .Seek "=", dbcnim.Text
    If .NoMatch Then
        .AddNew
        !nim = dbcnim.Text
        !kdmatakul = dbckode.Text
        !Abs = txtabsen.Text
        !tgs = txttugas.Text
        !uts = txtuts.Text
        !uas = txtuas.Text
        !total = txttotal.Text
        !grd = txtgrade.Text
        .Update
        MsgBox "Data Baru Telah
Disimpan", vbOKOnly +
vbInformation, "INFO"
```

```
Else
    .Edit
    !nim = dbcnim.Text
    !kdmatakul = dbckode.Text
    !Abs = txtabsen.Text
    !tgs = txttugas.Text
    !uts = txtuts.Text
    !uas = txtuas.Text
    !total = txttotal.Text
    !grd = txtgrade.Text
    .Update
    MsgBox "Data Editan Telah
Disimpan", vbOKOnly +
vbInformation, "INFO"
End If
End With
nonaktif
cmdsave.Enabled = False
End Sub
```

#### **Private Sub dbckode\_Click(Area As Integer)**

```
Dim b As Byte
    b = Len(dbckode.Text)
    If b < 3 Then
        Exit Sub
    End If
```

```
With dtmatakul.Recordset
    .Index = "kdmatakul"
    .Seek "=", dbckode.Text
    If .NoMatch Then
        MsgBox "KODE no " +
dbckode.Text + "tidak ada",
vbInformation
        dbckode.Text = ""
        dbckode.SetFocus
```

```
Else
    If dbckode = dbckode Then
        dbckode.Refresh
    End If
    Me.txtnmatakul.Text = !nmatakul
    Me.txtsks.Text = !sks
```

```
End If
End With
End Sub
```

**Private Sub dbcnim\_Click(Area As Integer)**

```
Dim b As Byte
    b = Len(dbcnim.Text)
If b < 3 Then
    Exit Sub
End If

With dtmhs.Recordset
    .Index = "nim"
    .Seek "=", dbcnim.Text
If .NoMatch Then
    MsgBox "NIM no " + dbcnim.Text
    + "tidak ada", vbInformation
    dbcnim.Text = ""
    dbcnim.SetFocus
Else
    If dbcnim = dbcnim Then
    dbcnim.Refresh
    End If
    Me.txtnmhs.Text = !nama
    Me.txtjuran.Text = !jur
End If
End With
End Sub
```

**Private Sub Form\_Activate()**

```
nonaktif
cmdsave.Enabled = False
End Sub
```

**Private Sub**

```
txtabsen_KeyPress(KeyAscii As Integer)
If KeyAscii = 13 Then
    txtabsen.Text = Val(txtabsen.Text) *
0.1
    txttugas.SetFocus
End If
End Sub
```

**Private Sub**

```
txttugas_KeyPress(KeyAscii As
Integer)
If KeyAscii = 13 Then
    txttugas.Text = Val(txttugas.Text)
* 0.2
    txttuts.SetFocus
End If
End Sub
```

**Private Sub**

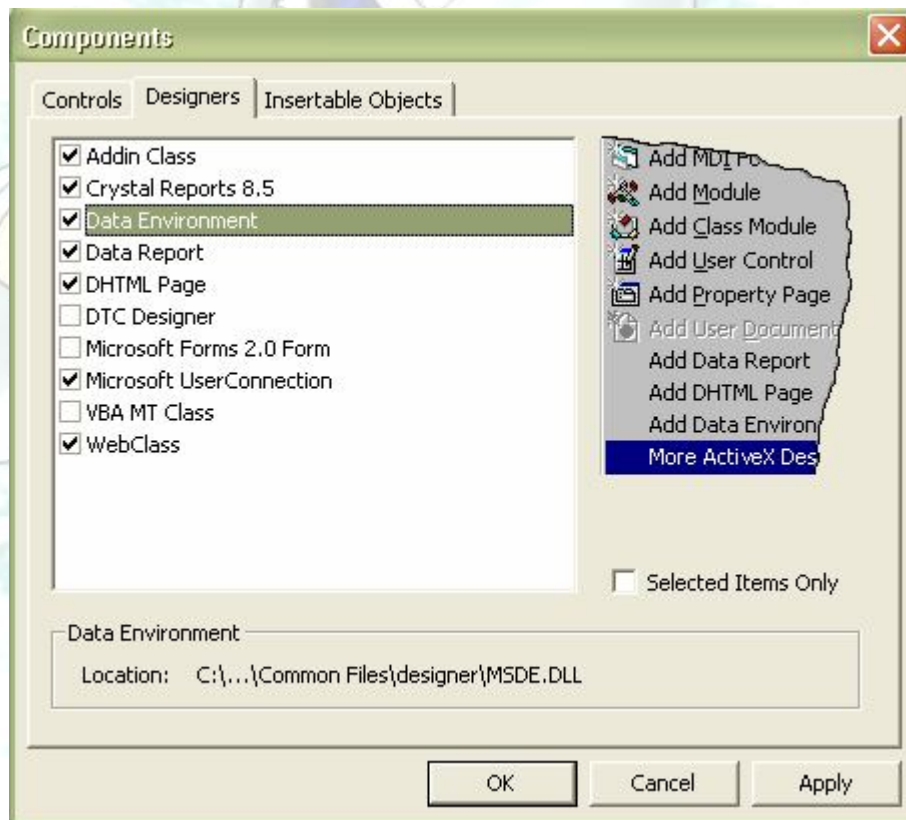
```
txtuas_KeyPress(KeyAscii As
Integer)
If KeyAscii = 13 Then
    txtuas.Text = Val(txtuas.Text) *
0.4
    txttotal.Text = Val(txtabsen.Text)
+ Val(txttugas.Text) +
Val(txttuts.Text) + Val(txtuas.Text)
    jml = txttotal.Text
    If jml >= 80 Then
        txtgrade.Text = "A"
    ElseIf jml >= 79 Then
        txtgrade.Text = "B"
    ElseIf jml >= 59 Then
        txtgrade.Text = "C"
    ElseIf jml >= 39 Then
        txtgrade.Text = "D"
    Else
        txtgrade.Text = "E"
    End If
End If
End Sub
```

**Private Sub txttuts\_KeyPress(KeyAscii
As Integer)**

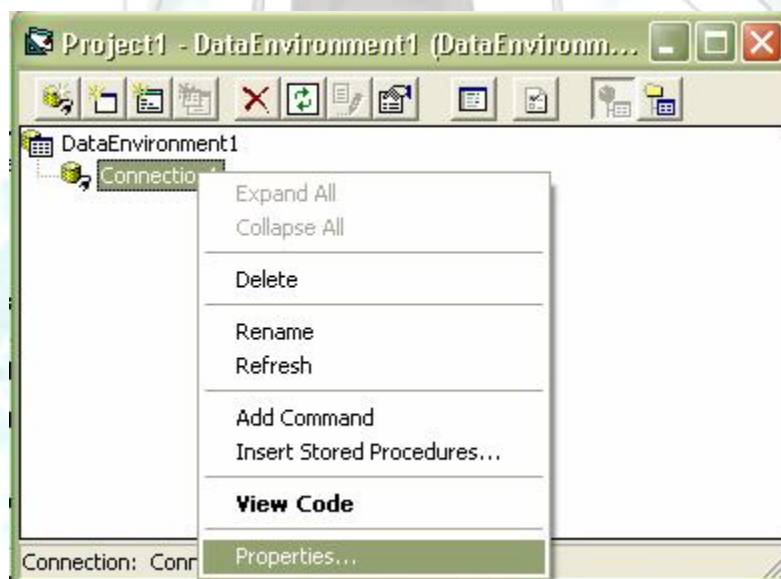
```
If KeyAscii = 13 Then
    txttuts.Text = Val(txttuts.Text) * 0.3
    txtuas.SetFocus
End If
End Sub
```

Buatlah Rancangan **report** yang diambil dr KHS  
Langkah-langkah pembuatan Report

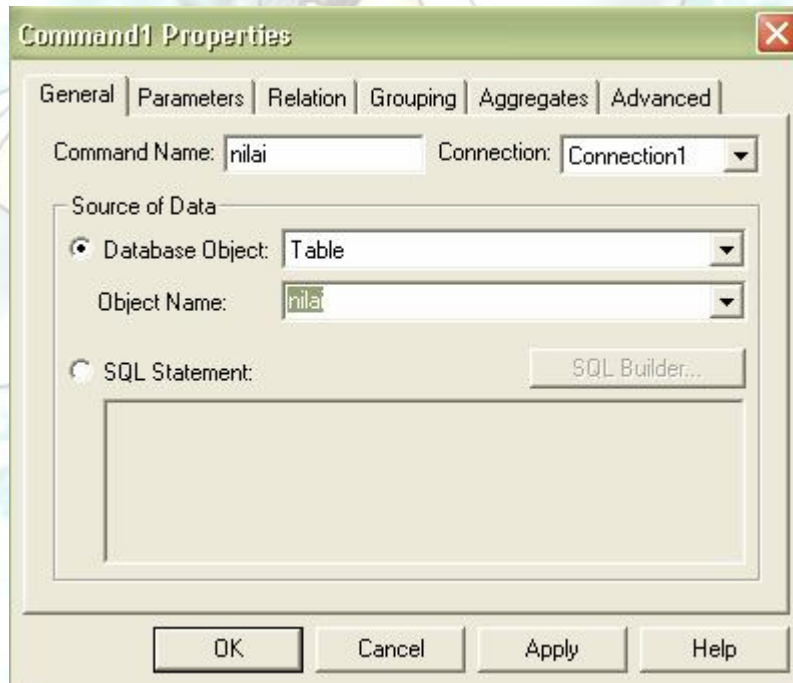
1. Klik Project → Components → Ceklist Data Environment
2. Klik Apply → Ok



3. Klik Project → Data Environment → Klik Kanan pada Connection1 → Propertise



4. Maka akan keluar Data Link Propertise → Pilih Microsoft Jet 4.0 OLE DB Provider → Next → Select or Enter Database name, anda Klik Command dan Pilih Database KHS → Klik Test Connection, kalau success maka Klik OK
5. Ubah Name: DE\_KHS → Klik Kanan pada Connection1 → Pilih Add Command → Klik Kanan Command1 → Pilih Propertise, Maka keluar kotak



6. Klik Apply → OK
7. Klik Project → Pilih Data Report → Klik dan Drag nilai yang di **DE\_KHS** pindahkan pada Data **Report\_nilai**
8. Buat desain Report untuk nilai sebagai berikut

www.faybinkz.tk

LAPORAN KARTU HASIL STUDY							
NIM	Kode	Absen	Tugas	UTS	UAS	Total	Grad
nim [nilai]	kdm	abs [nilai]	tgs [nilai]	uts	uas	total [nilai]	grd

9. Name : **Report\_nilai**, DataSource : **DE\_KHS**, DataMember : **nilai**

### Buat Desain FrmMenu



### Membuat Menu pada Form

- ⊕ Klik Menu Editor Pada Menu Bar
- ⊕ Tambahkan pada kotak pesannya sebagai berikut



### Listing Form Menu

```
Private Sub input_Click()
    frmnilai.Show
End Sub
```

```
Private Sub keluar_Click()
    end
End Sub
```

```
Private Sub lapnil_Click()
    Report_nilai.Show
End Sub
```

```
Private Sub matkul_Click()
    frmatakuliah.Show
End Sub
```

```
Private Sub mhs_Click()
    frmmahasiswa.Show
End Su
```

www.faybinkz.tk

RC